



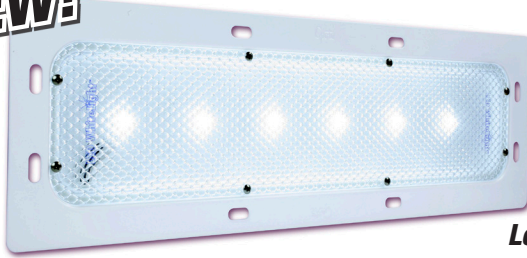
Grote

The first name in vehicle safety systems®

Grote Interior LED Lighting

- Encapsulant potting for total circuit board protection
- Robust, one-piece, aluminum housing and rugged polycarbonate lens
- Built-in, automatic thermal protection device
- Self-resetting internal cut-off switch to protect against excessive current
- Operating temperatures -40° to +122°F

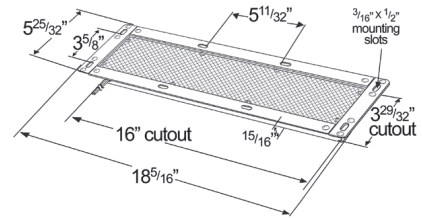
NEW! LED WhiteLight™ Recessed-Mount Dome Lamp



6 Diode
61291

\$119.99

Less Than Florescent Replacements!



Specifications for all listed Lamps

LED WhiteLight™ Recessed-Mount Dome Lamp w/Motion Sensor



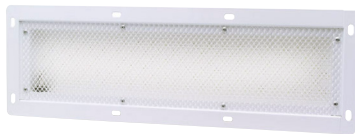
High Output "Reduced Count" 10 Diode with Motion Sensor
61F61

LED WhiteLight™ Recessed-Mount Dome Lamp



High Output "Reduced Count" 10 Diode
61261

LED WhiteLight™ Recessed-Mount Dome Lamp



High Output 18 Diode
61611

LED WhiteLight™ Recessed-Mount Dome Lamp



Dimmable High Output 18 Diode
61E61

Part #	Description	Lumens	Open Reefer	Compartmentalized Reefer	Open Van Trailer	Box Truck	Work Truck/Delivery Van	General Use	Ambulance
61611	High Output 18 Diode	1200	X	-	X				
61E61	Dimmable High Output 18 Diode	1200 High/400 Low						X	X
61291	6 Diode NEW!	1000	X	X	X	X	X	X	
61261	High Output "Reduced Count" 10 Diode	800	-	X	X	X	X		
61F61	High Output "Reduced Count" 10 Diode with Motion Sensor	800	X	X	X	X	X	X	

Special Pricing Ends February 28, 2012

Trilliant® Cube LED WhiteLight™ Work Lamp

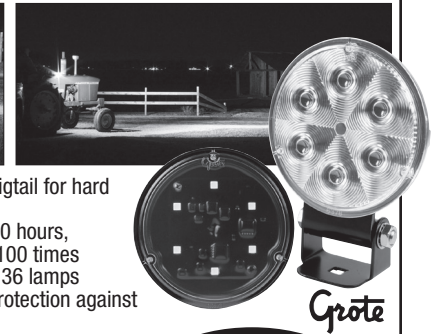
- LED performance in a new rugged package provides mounting flexibility, small size, and powerful performance
- Strong die cast aluminum housing stands up to shock and harsh workplace environments
- Available in TractorPlus™ and Wide Flood beam patterns
- Leak proof sealed lamp is certified IP69K; stands up to scratches, pressure washing, and harsh weather
- Available with Amp Superseal and Deutsch connector options
- Potted for complete circuit board protection against moisture and corrosion
- Both models are rated at 50,000 hours and project 1,000 lumens



\$115⁰⁰
Each

- 63991-5** Wide Flood, Amp Superseal Connector
63981-5 TractorPlus™, Amp Superseal Connector

T36 Series LED Work Lamps



- PAR 36 LED lamp includes a pigtail for hard wired applications
- Long Life LED's rated at 40,000 hours, provide 900 Lumens and last 100 times longer than incandescent PAR 36 lamps
- Thermal pull back circuit for protection against power surges
- Termination accommodates either screw or FastOn cable connections
- Color temperature provides a natural contrast most like sunlight, reducing eye fatigue and optimizing job performance

\$109⁹⁵
Lamps

- #63861-5** Tractor Plus™ Pattern Lamp with Bracket
#63871-5 Wide Flood Pattern Lamp with Bracket
#63821-5 Tractor Plus™ Pattern Conversion Bulb
#63831-5 Wide Flood LED Conversion Bulb

Conversion Bulbs
\$99⁹⁵

LED Whitelight™ Work Lamp



Grote

\$84⁹⁵
Each



- 50,000 hour LED Whitelight™ for long lasting service
- Greater Lumen output with lower power consumption than leading competitors
- Sun like color temperature provides a natural contrast, reducing eye fatigue and optimizing job performance
- Voltage Amp: 14 V - .8 AMP

- #63611** Flood
#63601 Spot
#63621 Trapezoid

Trilliant™ LED High Output Work Lamp

- Field tested in brutal off-road conditions
- Beam pattern can be changed with optional replacement lenses
- Easily mountable with durable 1/2" stud mounting bracket, also features Aim-N-Go technology
- Color temperature provides natural contrast most like sunlight, reducing eye fatigue and optimizing job performance
- Superior lamp for mining, military, construction, off-road and many more
- Voltage Amp: 10-30 V - 5.2-1.5 AMP



\$415⁰⁰
Each

Grote

- #63581** Flood **#63571** Spot
#63761 Wide Flood **#63591** Trapezoid

December 13, 2011 (29 Grote Interior Lights)

MIDWEST WHEEL COMPANIES
SINCE 1911

HDA TRUCK PRIDE

MIDWESTWHEEL.COM

Iowa

DES MOINES
1436 E. Ovid Ave.
OFFICE 515.265.1491
FAX 515.265.4120
PARTS FAX 800.314.4329
PARTS 800.888.0248

CEDAR RAPIDS
200 50th Ave. S.W.
MAIN 319.365.4453
FAX 319.365.6327
PARTS FAX 877.706.6085
PARTS 800.332.5435

CLEAR LAKE
840 Hwy. 18 W.
MAIN 641.357.7101
FAX 641.357.8190
PARTS FAX 800.548.9674
PARTS 800.397.5630

KANSAS CITY
5801 E. Front St.
MAIN 816.471.1552
FAX 816.471.0813
PARTS 800.821.7402

TRUCK PARTS SUPER STORE™

DAVENPORT
8502 Northwest Blvd.
MAIN 563.322.2671
FAX 563.322.5940
PARTS fax 800.553.1886

SIOUX CITY
1819 E. 4th St.
MAIN 712.252.7969
FAX 712.252.6149
PARTS FAX 800.943.3534

Missouri

GRANDVIEW
14817 So. 71 Hwy.
MAIN 816.318.9111
FAX 816.318.9114
PARTS 866.318.9111