



## LIFE-TIME FENDERS

Sold in Pairs

### Super Smooth

- Smooth design
- .125" polished aluminum
- Sold in pairs

### 2 Smooth with Power Ribs

- 16 gauge mirror stainless steel
- Beaded edge for maximum strength
- Sold in pairs

### 4 Rib

- 18 gauge mirror stainless steel
- Beaded edge for maximum strength
- Sold in pairs

### Single Axle Fenders - Length: 80", Opening: 50", 24.5" Wheel Applications



Super Smooth  
Polished Aluminum  
#SA200-80  
Stainless Steel  
#SF200-80



2 Smooth  
Stainless Steel  
#SR200-80NL



4 Rib  
Stainless Steel  
#SR200-80  
Aluminum  
#AR200-80

Requires a  
Mounting Bracket Kit  
Pre-Drilled Tubular #L200DS  
Or  
Triangle #L200TS  
(See Mounting Kits Below)

### Half Tandem Fenders - Length: 66", Opening: 51", 24.5" Wheel Applications



Super Smooth  
Polished Aluminum  
#SA300-66  
Stainless Steel  
#SF300-66



2 Smooth  
Stainless Steel  
#SR300-66NL



4 Rib  
Stainless Steel  
#SR300-66  
Aluminum  
#AR300-66

Requires a  
Mounting Bracket Kit  
Pre-Drilled Tubular #U300DS  
Or  
Triangle #U300TS  
(See Mounting Kits Below)

### Full Tandem Fenders - 24.5" Wheel Applications



Super Smooth  
Polished Aluminum  
#SA400-132  
Length: 132"  
Opening 105"



Super Smooth  
Stainless Steel  
#SF400-120  
Length: 120"  
Opening 100"



2 Smooth  
Stainless Steel  
#SR400-126NL  
Length: 126"  
Opening 104"



4 Rib  
Stainless Steel  
#SR400-120  
Length: 120"  
Opening 100"  
Aluminum  
#AR400-120

Requires a  
Mounting Bracket Kit  
Pre-Drilled Tubular #U400DS  
Or  
Triangle #U400TS  
(See Mounting Kits Below)

### Mounting Bracket Kits for Super Smooth, 2 Smooth, & 4 Rib Fenders

Complete kit installs two fenders



#### Single Axle Kits

#L200DS Pre-drilled Tubular

Front Bracket	Rear Bracket	Hardware
(2) B607DS	(2) B607DS	(2) B4HS

#L200TS Triangle		
Front Bracket	Rear Bracket	Hardware
(2) B610TS	(2) B610TS	(2) TS100H



#### Half Tandem Kits

#U300DS Pre-drilled Tubular

Front Bracket	Rear Bracket	Hardware
(2) B607DS	(2) B900	(1) B4HS

#U300TS Triangle		
Front Bracket	Rear Bracket	Hardware
(2) B610TS	(2) B900	(1) B4HS / (1) TS100H



#### Full Tandem Kits

#U400DS Pre-drilled Tubular

Front Bracket	Rear Bracket	Hardware
(2) B607DS	(2) B900	(1) B4HS

#U400TS Triangle		
Front Bracket	Rear Bracket	Hardware
(2) B610TS	(2) B900	(1) B4HS / (2) TS100H

## Cradle Mount Quarter Fenders

- **NEW!** Stake plate inside the mounting tube for more reliable connection
- **NEW!** All component materials are now "matching"
- 18 gauge stainless steel or .090" aluminum
- Standard & low mount
- Hidden mounting hardware
- Fully assembled complete kits
- Fits 24.5" wheels
- Life-Time top flaps included

### Standard Mount

P/N	Material	Mount
SS211B2	Stainless	No Mount
SA211B2	Aluminum	No Mount

### Low Mount

P/N	Material	Mount
SS311B2	Stainless	No Mount
SA311B2	Aluminum	No Mount



## Poly Quarter Fenders - Lightweight & Durable

- **NEW!** Stake plate inside the mounting tube for more reliable connection
- 100% virgin polyethylene
- Hidden mounting hardware
- Fully assembled complete kits
- Fits 24.5" wheels
- Life-Time top flaps included

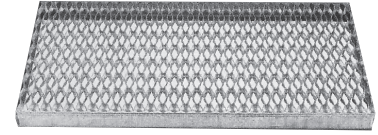
**#PS210B2**  
Standard Mount



## Diamond Pattern Deck Plates

P/N	Material	Size
054-00042	Galvanized Steel	23.75" x 33.75"
AG2434	Aluminum	24" x 34"
AG3634	Aluminum	36" x 34"

\*\*Replacement plastic arm, backing block & bolt kit available. Part #PB501026A



## Universal Tube Mount Clamp



**#B2KH** Zinc Plated

## Tube End Caps

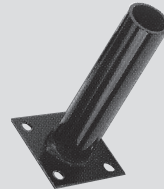


**#NP18**  
Nickel Plated

**#CP18**  
Poly

## Post Mounts

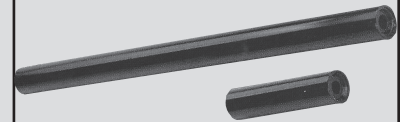
### Standard Flange Fender Mount



**#K2900F**  
8" Four Bolt

**30" Post Mount Bracket**  
**#B607G**  
Galvanized, One Bolt

### Single Post Quarter Fender Mount



**#K2900**  
8" One Bolt

## 28" Slotted Mounting Tubes

**#B3SX**  
Stainless, Use with Cradle Mount

**#B2SX**  
Stainless, Use with U-Bolt Mount

**#B3GX**  
Galvanized, Predrilled



## 24" x 6" Top Flaps

F1SLT	Life-Time Logo	Black
F1SPL	No Logo	Black
F1SLPW	No Logo	White
F1SPR	No Logo	Black Rubber



## Universal Adjustable Center Bracket

- 3-1/2" vertical adjustment
- Premium e-coat finish
- Unhanded, left or right application
- Sold individually & supplied in all universal installation kits



**#B900**

## Triangle Mount Front/Rear Bracket

- Stainless steel
- Rubber gasket included
- Stainless mounting hardware included
- Sold individually



**#B610TS**

December 2011 (21 Lifetime Fenders)

**MIDWEST WHEEL**  
COMPANIES  
SINCE 1911

**HDA**  
TRUCK PRIDE

**VISA** **MasterCard** **DISCOVER** **AMERICAN EXPRESS**

**MIDWESTWHEEL.COM**

**Iowa**

**DES MOINES**  
1436 E. Ovid Ave.  
OFFICE 515.265.1491  
FAX 515.265.4120  
PARTS FAX 800.314.4329  
PARTS 800.888.0248

**TRUCK PARTS SUPER STORE™**

**CEDAR RAPIDS**  
200 50th Ave. S.W.  
MAIN 319.365.4453  
FAX 319.365.6327  
PARTS FAX 877.706.6085  
PARTS 800.332.5435

**DAVENPORT**  
8502 Northwest Blvd.  
MAIN 563.322.2671  
FAX 563.322.5940  
PARTS FAX 800.553.1886

**CLEAR LAKE**  
840 Hwy. 18 W.  
MAIN 641.357.7101  
FAX 641.357.8190  
PARTS FAX 800.548.9674  
PARTS 800.397.5630

**SIOUX CITY**  
1819 E. 4th St.  
MAIN 712.252.7969  
FAX 712.252.6149  
PARTS FAX 800.943.3534

**MISSOURI**

**KANSAS CITY**  
5801 E. Front St.  
MAIN 816.471.1552  
FAX 816.471.0813  
PARTS 800.821.7402

**GRANDVIEW**  
14817 So. 71 Hwy.  
MAIN 816.318.9111  
FAX 816.318.9114  
PARTS 866.318.9111