



COUPLER PRODUCTS

Pintle Hooks • Couplers • Drawbars • Tow Hooks • Tow Shackles

Introducing...

Holland's new & improved pintle hook lineup featuring one-handed latch operation with FastLatch™.

A simpler, easier, faster pintle hook—the industry has asked for it for years. Holland has answered.

Introducing FastLatch™ — featuring Holland's revolutionary new one-handed latch operation with automatic secondary lock.

Eliminating the need for cotter pins and chains, Holland's FastLatch™ is the quickest and simplest latch in the industry. Paired with Holland's revolutionary NoLube™ technology, the next generation of Holland pintle hooks does not require any lubrication.



Holland's improved pintle hooks are:

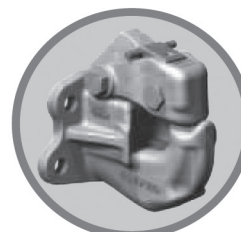
- Lighter weight
- More durable
- Stronger
- Safer and easier to operate
- Lubrication free with **NoLube** technology

And, all Holland pintle hooks continue to carry the industry's best warranty and commitment to excellence.

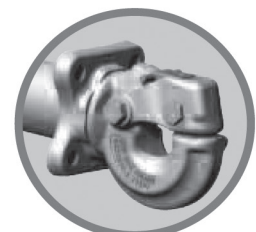
FastLatch™ is now standard on these models.



PH-30RP41



PH-210/310/410
SERIES



PH-775SL11

PINTLE HOOKS

PH-10RP41 **FAST LATCH**

Application: A versatile rigid type pintle hook designed for over-the-road and off-road towing within road capacities.

Drawbar Eye Dimensions:

2" to 3" I.D. with 1.25 to 1.63" diameter section.

Weight: 7.47 lbs.

Capacities: 2,000 lbs. Maximum Vertical Load
10,000 lbs. Maximum Gross Trailer Weight

PH-30RP41 **FAST LATCH**

Weight: 8.38 lbs.

Capacities: 6,000 lbs. Maximum Vertical Load
30,000 lbs. Maximum Gross Trailer Weight



PH-10RP41



PH-30RP41

PH-30SB41 **FAST LATCH**

Application: A versatile swivel style and front-mount pintle hook designed for over-the-road and off-road applications where a significant amount of articulation is desired for torsional relief. The spring provides shock absorption at the coupling - ideal for heavier-duty utility and construction applications.

Drawbar Eye Dimensions:

2.38" to 3" I.D. with 1.25 to 1.63" diameter section.

Weight: 38 lbs.

Capacities: 6,000 lbs Maximum Vertical Load
30,000 lbs. Maximum Gross Trailer Weight



PH-210RA11 **FAST LATCH**

Complete assembly includes a pintle hook, plunger, air chamber and mounting bracket.

PH-210RN11 **FAST LATCH**

Pintle hook without an air chamber, bracket or plunger.

Weight: 42 lbs.

Capacities: 18,000 lbs. Maximum Vertical Load
90,000 lbs. Maximum Gross Trailer Weight

Drawbar Eye Dimensions:

2.38" to 3" I.D. with 1.25" to 1.63" diameter section.



PH-410RA11 **FAST LATCH**

Complete assembly includes a pintle hook, plunger, air chamber and mounting bracket.

PH-410RN11 **FAST LATCH**

Pintle hook without an air chamber, bracket or plunger.

Weight: 42 lbs.

Capacities: 20,000 lbs. Maximum Vertical Load
100,000 lbs. Maximum Gross Trailer Weight

Drawbar Eye Dimensions:

2.38" to 3" I.D. with 1.25" to 1.63" diameter section.



PH-760

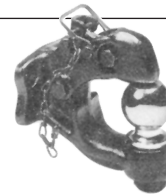
Application: Heavy duty construction, utility (heavy haul) primarily off-road applications provides torsional relief where a significant amount of articulation is required in a swivel-type clamp mount pintle hook.

Drawbar Eye Dimensions:

2" to 3" I.D. with 1.25 to 1.62" diameter section.

Weight: 36 lbs.

Capacities: 9,800 lbs Maximum Vertical Load
49,000 lbs. Maximum Gross Trailer Weight



Multi-Hitch

BH-200RN51

Pintle Hook with 2" Ball

Capacities: 19,000 lbs. Maximum Gross Trailer Weight

E-19

Combination Pintle with 2" Ball

Capacities: 10,000 lbs. Maximum Gross Trailer Weight

E-19R

2" Replacement Ball

Capacities: 10,000 lbs. Maximum Gross Trailer Weight

E-20

Combination Pintle with 2-5/16" Ball

Capacities: 12,000 lbs. Maximum Gross Trailer Weight




E-20R

2-5/16" Replacement Ball

Capacities: 12,000 lbs. Maximum Gross Trailer Weight

All Pintle Hooks are available with Tethered Lock Pin.

DRAW BARS

<p>DB-1407-S-1 Application: A versatile, bolt-on (shank mounted) drawbar used on trailers, semitrailers (including doubles), and equipment designed for on- and off-road towing applications within the stated capacities. Weight: 24 lbs. Capacities: 16,000 lbs. Maximum Vertical Load 85,000 lbs. Maximum Gross Trailer Weight</p>	
<p>DB-1249-49 Application: A very versatile bolt-on (shank mounted) drawbar used on trailers, semitrailers (including doubles), and equipment designed for on- and off-road towing applications within the stated capacity. Weight: 24 lbs. Capacities: 9,000 lbs. Maximum Vertical Load 45,000 lbs. Maximum Gross Trailer Weight</p>	
<p>DB-1250-3 Application: A versatile bolt-on (shank mounted) drawbar designed for on and off-road trailer and equipment towing within the stated capacities. Weight: 9 lbs. Capacities: 3,000 lbs. Maximum Vertical Load 15,000 lbs. Maximum Gross Trailer Weight</p>	
<p>DB-1228-1 Application: Used on straight tongue trailers, semitrailers (including doubles), and equipment designed for on and off-road towing applications within stated capacities. Weight: 20 lbs. Capacities: 4,000 lbs. Maximum Vertical Load 20,000 lbs. Maximum Gross Trailer Weight <i>NOTE: Do not weld! Not designed to be welded to a trailer tongue.</i></p>	
<p>DB-1238 Application: Used on straight tongue trailers, semitrailers (including doubles), and equipment designed for on- and off-road towing applications within the stated capacities. Weight: 26 lbs. Capacities: 4,500 lbs. Maximum Vertical Load 22,000 lbs. Maximum Gross Trailer Weight</p>	
<p>DB-040DQ1 Application: Used on trailers, semitrailers (including doubles), and equipment designed for on and off-road towing applications within the stated capacities. Weight: 14 lbs. Capacities: 8,000 lbs. Maximum Vertical Load 40,000 lbs. Maximum Gross Trailer Weight <i>NOTE: Do not weld! Not designed to be welded to a trailer tongue.</i></p>	
<p>DB-060FQ1 Application: Used on trailers, semitrailers (including doubles), and equipment designed for on and off-road towing applications within the stated capacities. Weight: 19 lbs. Capacities: 15,000 lbs. Maximum Vertical Load 60,000 lbs. Maximum Gross Trailer Weight <i>NOTE: Do not weld! Not designed to be welded to a trailer tongue.</i></p>	
<p>DB-100FQ1 Application: This unique heavy duty drawbar is used on trailers, semitrailers (including doubles), and equipment designed for on- and off-road towing applications within the stated capacities. Weight: 19 lbs. Capacities: 20,000 lbs. Maximum Vertical Load 100,000 lbs. Maximum Gross Trailer Weight</p>	



TOW SHACKLE

TH-0681

Application: This versatile tow shackle is used for lifting, tie downs, and emergency tow cable or chain attachments within stated capacities. Tow shackles are to be used for only emergency towing. They are not intended for use in towing trailers or equipment on or off-road.

Weight: 5 lbs.

Capacities: 18,000 lbs. Maximum Drawbar Pull

Drawbar Eye Dimensions:

2.75" I.D. Clevis with a .88" diameter cross section

**Use 5/8" bolts to fasten*



TOW HOOKS

TH-1255-R OR -L

Application: Designed to be used in pairs for a tow cable or chain attachment. These tow hooks are to be used for only emergency towing. Not intended for use in towing trailers or equipment on or off-road.

Weight: 5 lbs. each

Capacities: 15,000 lbs. Maximum Drawbar Pull

**Right or left hand tow hook has 2.5" opening.*



PINTLE MOUNT & LATCH KITS

PM-204A

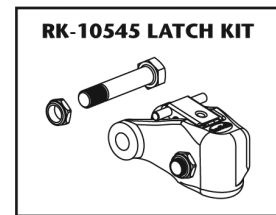
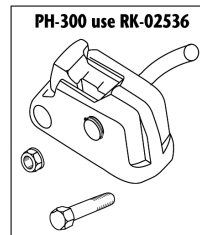
Application: These unique, patented, one piece cast pintle mounts provide more strength and lighter weight. They are used in conjunction with light duty pintle hooks in such applications as utility, construction, landscaping, and municipal vehicles that tow a variety of trailers, air compressors, mixers, etc. Typically, they are used with Holland's PH-60-AL, PH-16-B, PH-16-BA, PH-30, and PH-T-60-AOL-8 pintle hooks. These mounts fit into standard receivers on vehicles.

Capacities:
Class IV Max: 10,000 lbs. GTW
 1,000 lbs. Max. Vertical Weight



Application: Replacement part latch kits are available for most Holland pintle hooks. Latch kits are pre-assembled to eliminate loose parts and improper component assembly and reduce replacement time. In addition, the kits ensure that all worn and damaged parts are replaced.

Latch Kit #	Pintle Hook Model #
RK-02536	PH-200 (-300, -400, -400-H) Series
RK-10545	PH-210, PH-310, PH-410



CATALOG NUMBER 19

June 2010 (PintleHooks)



Iowa

Des Moines
 1436 E. Ovid
 (515) 265-1491
 Fax (515) 265-4120
 Parts Fax (800) 314-4329
 (800) 888-0248

Cedar Rapids
 200 50th Ave. S.W.
 (319) 365-4453
 Fax (319) 365-6327
 (800) 332-5435
 Fax (877) 706-6085

Clear Lake
 840 Hwy. 18 W.
 (641) 357-7101
 Fax (641) 357-8190
 (800) 397-5630
 Fax (800) 548-9674

Missouri

Kansas City
 1819 Troost Ave.
 (816) 471-1552
 Fax (816) 471-0813
 (800) 821-7402

Grandview
 14817 So. 71 Hwy.
 (816) 318-9111
 Fax (816) 318-9114
 Toll Free (866) 318-9111

Truck Parts
SUPER STORE™

Davenport
 8502 Northwest Blvd.
 (563) 322-2671
 Fax (563) 322-5940
 (800) 553-1886

Sioux City
 1819 E. 4th St.
 (712) 252-7969
 Fax (712) 252-6149
 (800) 943-3534