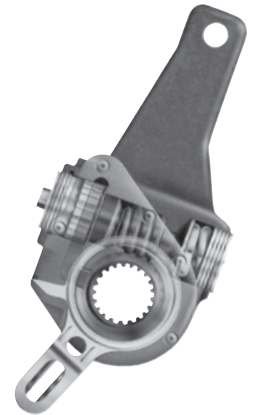




## Haldex ABA Features & Benefits

Features	Haldex S-ABA	Haldex Advantage	Value to Customer
<b>Manufactured</b>	USA/Sweden	Local production and engineering resources	Short lead time and responsiveness to customer needs
<b>Reference Type</b>	Control Arm	More flexible for full application coverage - No external linkage - Improved sealing of internal components	One supplier for full coverage reliability
<b>Reference Flexibility</b>	Yes	Reduces chances for installation errors	Reduces liability and downtime
<b>Self-Setting</b>	Yes	Quick, easy installation	Reduces downtime and maintenance costs
<b>Adjustment Type</b>	Clearance	Keeps brakes in adjustment, not affected by deflection and thermal expansion	Optimal performance - Reduced risk for roadside inspection violations
<b>Adjustment Characteristic</b>	Very Gradual	Consistent, precise adjustments for optimum lining-to-drum clearance	Optimal performance - Reduced risk for roadside inspection violations
<b>Stroke Adjustment</b>	Release	More precise adjustments to reduce affects of deflection and thermal expansion	Optimal performance - Reduced risk for roadside inspection violations
<b>Extreme Off-sets/ Inclinations</b>	Yes	Full application coverage	One source for all brake adjuster needs



**6-Year  
1,000,000 mile\*  
WARRANTY!**

\*For on-highway trucks, tractors and trailers

## Haldex Gold Seal & Life Seal Spring Brake Features and Benefits



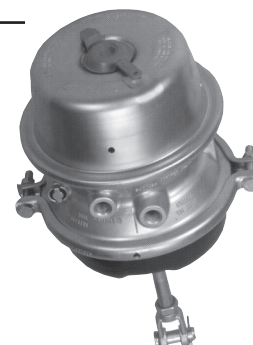
### Haldex Life Seal

- Eliminates contamination by completely sealing the emergency brake chamber
- No vent holes, no filters, no external breather tube so contaminants can't enter chamber
- Integral caging tool and push rod maintain alignment as the spring is compressed
- Guided, patented hot set compression spring for added output force and life
- Available in 2430 and 3030 in 2.50" and 3.00" stroke models

**6-Year  
WARRANTY!**

### Haldex Gold Seal

- Zinc-plated for outstanding protection
- Patented heat-treated compression spring for added force
- Double o-ring design
- Tethered dust plug
- Available in 2024 through 3636 in a variety of strokes



**4-Year  
WARRANTY!**

**Haldex**

# EZ-N-LITE® CLUTCH

*Driver fatigue has been established as a major source of highway accidents.*



The patented design of the EZ-N-LITE Clutch delivers maximum plate force & torque capacity at nearly a **50% REDUCTION** in pedal effort, ensuring driver comfort & unmatched performance.

### Exclusive Features:

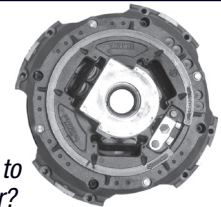
### Benefit:

- |                              |   |   |
|------------------------------|---|---|
| Swiveling spring seat cradle | → | Decreased pedal effort, increased driver comfort      |
| Floating drive arrangement   | → | Reduced sub-assembly wear, optimum clutch performance |
| Large cover windows          | → | Increased heat dissipation, longer life               |



# TORQUE MONSTER

## High Performance EZ-N-LITE® Clutches from Haldex



Today's diesel engines demand peak clutch torque at low RPMs. Haldex has the solution... Torque Monster - with up to 2,250 ft-lb torque ratings. Why simply match OE specifications when you can exceed them with the Torque Monster?

Offered in these torque ranges:  
1860  
2050  
2250

*Haldex clutches provide longer, life, better performance and unmatched quality when compared to Eaton Spicer.*

### Exclusive Features:

### Benefit:

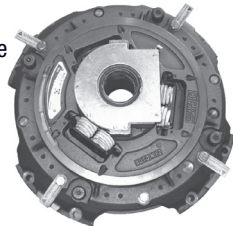
- |                              |   |  |
|------------------------------|---|--|
| Swiveling spring seat cradle | → | Decreased pedal effort, increased driver comfort |
| Large cover windows          | → | Increased heat dissipation longer life           |
| Floating drive arrangement   | → | Reduced wear / optimum performance               |
| Self-aligning clutch         | → | Longer life and reduced internal wear            |

# AUTO-N-EZ

## Haldex AUTO N EZ Clutches

### AUTO N EZ® Clutch

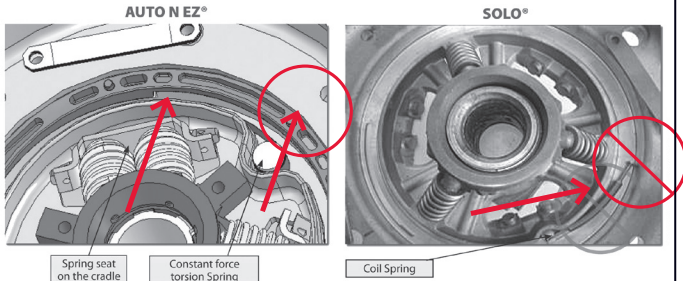
- Self-adjusting feature that WORKS!
  - Flat torsion spring provides constant force
  - No hook Coil Spring
- The clutch that thinks like a mechanic!
  - It adjusts automatically!



**VS.**

### Eaton Spicer SOLO® Clutch

- Hook coil spring design
  - Spring force is reduced as clutch wears
  - Dirt build-up between the spring coils further reduces the spring force
- The auto adjustment feature is difficult to control
  - Difficult to control the clutch adjustment in proportion to the wear



# COOL-N-EZ

## High Performance COOL-N-EZ® Clutches from Haldex

### Haldex Cool-N-EZ® Clutches

- Cool-N-EZ® Cast Cover for Longer Life!
  - Keeps the clutch cooler
  - 4 large openings offers fantastic air flow
- Extremely Easy Pedal Effort Using the Swivelling Spring Seat Cradle
- Cool-N-EZ® Outperforms the Competition!
- Free Floating Intermediate Plate and Adapter Ring
  - Even engagement and wear



**VS.**

### Eaton Spicer™ Pressed/Stamped Steel Cover

- Pressed/Stamped Steel Cover
  - Poor cooling
  - No air flow for cooling
- Steel Cover Deflection
  - Causes uneven wear and hot spots
  - Transmits engine fluctuations
- High Pedal Effort, Not Offered in an EZ-Pedal
  - Only Offered in an Angle Spring Design
- Strap Drive Intermediate Plate and Adapter Ring
  - Causes uneven engagement and wear
  - Leads to Premature Clutch Failure



December 22, 2011 (8 SpringBrakes\_ABA\_Clutch)

**MIDWEST WHEEL COMPANIES**  
SINCE 1911

**HDA TRUCK PRIDE**

MEMBER

VISA MasterCard DISCOVER AMERICAN EXPRESS

**MIDWESTWHEEL.COM**

**DES MOINES**  
1436 E. Ovid Ave.  
OFFICE 515.265.1491  
FAX 515.265.4120  
PARTS FAX 800.314.4329  
PARTS 800.888.0248

**CEDAR RAPIDS**  
200 50th Ave. S.W.  
MAIN 319.365.4453  
FAX 319.365.6327  
PARTS FAX 877.706.6085  
PARTS 800.332.5435

**DAVENPORT**  
8502 Northwest Blvd.  
MAIN 563.322.2671  
FAX 563.322.5940  
PARTS FAX 800.553.1886

**TRUCK PARTS SUPER STORE™**

**CLEAR LAKE**  
840 Hwy. 18 W.  
MAIN 641.357.7101  
FAX 641.357.8190  
PARTS FAX 800.548.9674  
PARTS 800.397.5630

**SIOUX CITY**  
1819 E. 4th St.  
MAIN 712.252.7969  
FAX 712.252.6149  
PARTS FAX 800.943.3534

**KANSAS CITY**  
5801 E. Front St.  
MAIN 816.471.1552  
FAX 816.471.0813  
PARTS 800.821.7402

**GRANDVIEW**  
14817 So. 71 Hwy.  
MAIN 816.318.9111  
FAX 816.318.9114  
PARTS 866.318.9111

Iowa

Missouri