

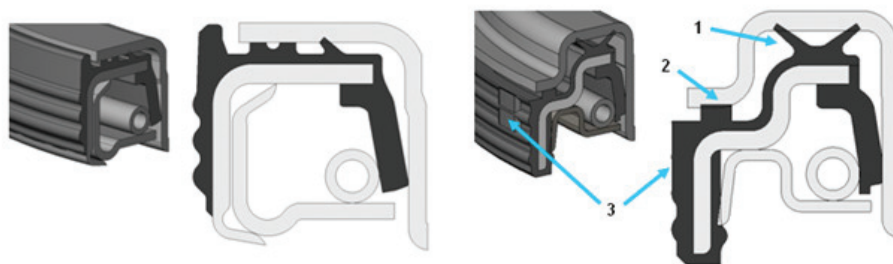


Product Improvement – Guardian® HP TN Spindle Application



A Higher Standard of Performance.™

STEMCO is pleased to announce that the 307-0743 Guardian HP, has been improved to significantly extend both reliability and durability. The improved seal incorporates the best features for preventing the leading causes of seal life degradation, contamination ingress and heat generation. The features consist of a new contamination system, a new thrust pad, and a new OD bead. The cross-sections displayed below highlight the changes to this seal.

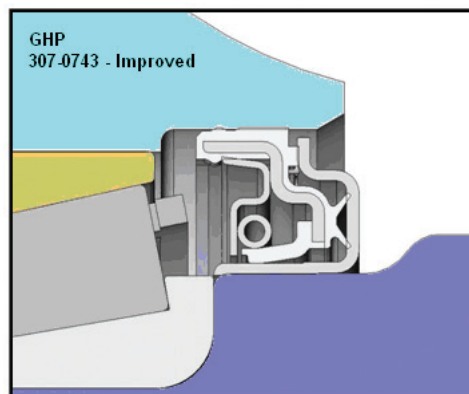
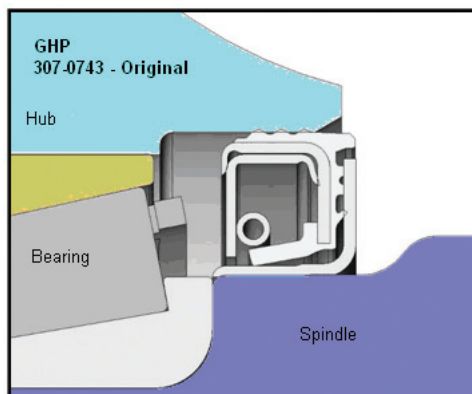


Improved Performance

1. An innovative contaminant exclusion system is incorporated to prevent the ingress of air and water borne contaminants. The exclusion system utilizes two flexible sealing points and an axial labyrinth path that work conjointly to keep debris out of the seal and extend life.
2. A new intermittent thrust pad reduces the frictional heat generated during operation while properly aligning the seal components spacing.
3. The new OD bead system improvement has made the installation more robust by reducing thrust loading while maintaining an adequate OD to hub bore seal. Anti-rotational “SMART” features have been added to the OD to improve the seal’s ability to resisting rotational torque.

Installation

The Guardian HP recommended installation procedures and tooling will not be affected by the improvements to this seal.





ASET Matched Bearing Sets



- Easy part number identification.
- The components of the ASET Bearings are the same ones that are used on the OEM production lines to produce Platinum Plus - 5 year warranty wheel end packages.
- Lower cost alternatives to competitors, still in set form.



Sentinel® Hub Caps

The Heart of the Platinum Performance System



Standard Sentinel® Hub Cap

- Tamper-proof hub cap technology provides an unmatched filtering system for wheel ends to eliminate contamination of the lubricant from grime, dirt, or water.

Integrated Sentinel® Hub Cap

- Integrates the Sentinel Technology directly into the hub cap with fewer components & greater wheel visibility.



Platinum Performance System®



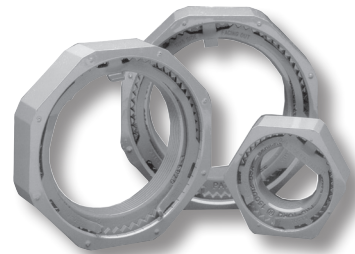
Featuring flexible options to fit your installation preferences:

- Guardian® HP - axle-installed or Discover® - Hub-installed Seal
- Pro-Torq® Advanced Axle Spindle Nut
- Sentinel® or Integrated Sentinel® Hub Cap
- Platinum Matched Bearing Sets.

Flexible • Serviceable • Affordable

Don't Forget to Add: Sentinel® Extended Service Plugs

Pro-Torque® Axle Spindle Nuts



- Controls axial motion, holding bearing end play at .001" to .003". Axles track truer for longer tire life, extended wheel seal & bearing life & more accurate wheel end sensor monitoring on ABS.

Application	Discover	Guardian HP	Inner Bearing Set	Outer Bearing Set	Pro-Torq	Standard Sentinel	Integrated Sentinel
						Oil Grease 348 349	Oil Grease 356 358
Pro Par Trailer, Meritor TP, Fruehauf	373-0223	307-0723	ASET 445-410	ASET 445-410	447-4723	4075 or 4195	4075 or 4195
Eaton P-22	373-0223	307-0723	ASET 445-410	ASET 445-410	447-4724	4075 or 4195	4075 or 4195
22,500# Trailer, Meritor, Eaton, Dana	373-0243	307-0743	ASET 248-210	ASET 049-011	447-4743	4009	4009
12,000# Front. Meritor	383-0236	308-0864	ASET 047-011 or	ASET 3782-20	448-4836	See Catalog	See Catalog
Eaton	383-0236	308-0836	ASET 049-011	ASET 3782-20	448-4837		
16,000# Front Mack	383-0264	308-0864	N/A	N/A	448-4864	See Catalog	See Catalog
Meritor FL	383-0264	308-0836	N/A	N/A	448-4865		
38,000# - 46,000# Tandem Drive Meritor, Dana, Eaton, Navistar	393-0273	309-0973	ASET 594A-92A or ASET 598A-92A	ASET 580-72	449-4973		

November 23, 2011 (5 Stemco Tech Tip)

MIDWEST WHEEL COMPANIES
SINCE 1911

HDA TRUCK PRIDE

AMERICAN EXPRESS MEMBER

VISA MasterCard DISCOVER

MIDWESTWHEEL.COM

<p>Iowa</p>	<p>DES MOINES 1436 E. Ovid Ave. OFFICE 515.265.1491 FAX 515.265.4120 PARTS FAX 800.314.4329 PARTS 800.888.0248</p>	<p>CEDAR RAPIDS 200 50th Ave. S.W. MAIN 319.365.4453 FAX 319.365.6327 PARTS FAX 877.706.6085 PARTS 800.332.5435</p>	<p>CLEAR LAKE 840 Hwy. 18 W. MAIN 641.357.7101 FAX 641.357.8190 PARTS FAX 800.548.9674 PARTS 800.397.5630</p>	<p>MISSOURI</p>	<p>KANSAS CITY 5801 E. Front St. MAIN 816.471.1552 FAX 816.471.0813 PARTS 800.821.7402</p>
	<p>DAVENPORT 8502 Northwest Blvd. MAIN 563.322.2671 FAX 563.322.5940 PARTS fax 800.553.1886</p>	<p>SIoux CITY 1819 E. 4th St. MAIN 712.252.7969 FAX 712.252.6149 PARTS FAX 800.943.3534</p>	<p>GRANDVIEW 14817 So. 71 Hwy. MAIN 816.318.9111 FAX 816.318.9114 PARTS 866.318.9111</p>		